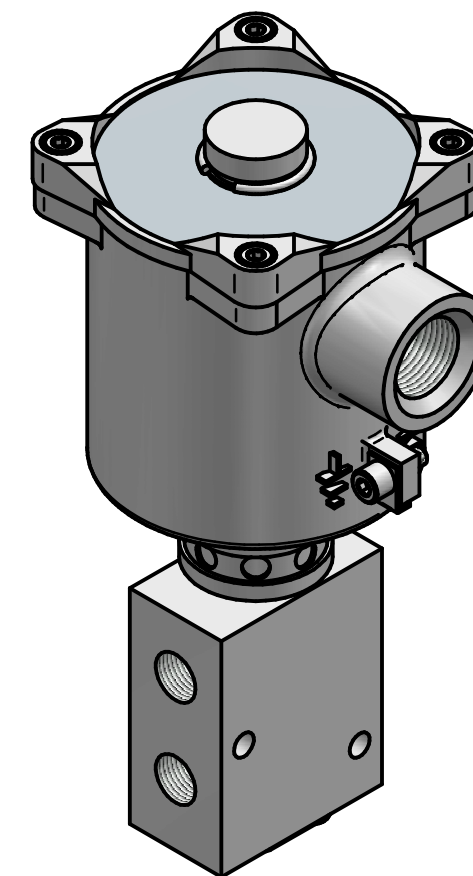


Copyright © 2000 BIFOLD FLUIDPOWER LTD.	All Rights Reserved	C.A.D. Produced Drawing DO NOT Change By Hand
---	---------------------	---



The diagram shows a three-phase motor with a star-delta switch. It has three input terminals labeled 1, 2, and 3. Terminal 1 is connected to a phase winding. Terminal 2 is connected to another phase winding. Terminal 3 is connected to the third phase winding. A switch mechanism is shown, allowing the motor to be connected in either a star or delta configuration. A spring is shown at the bottom, likely representing the return spring for the switch mechanism.