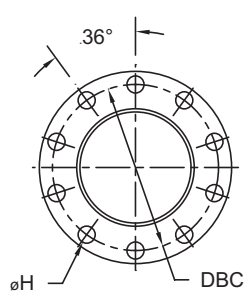
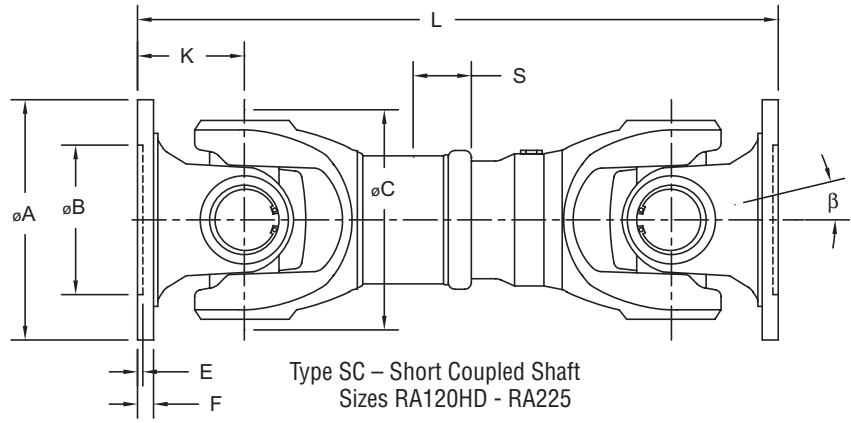
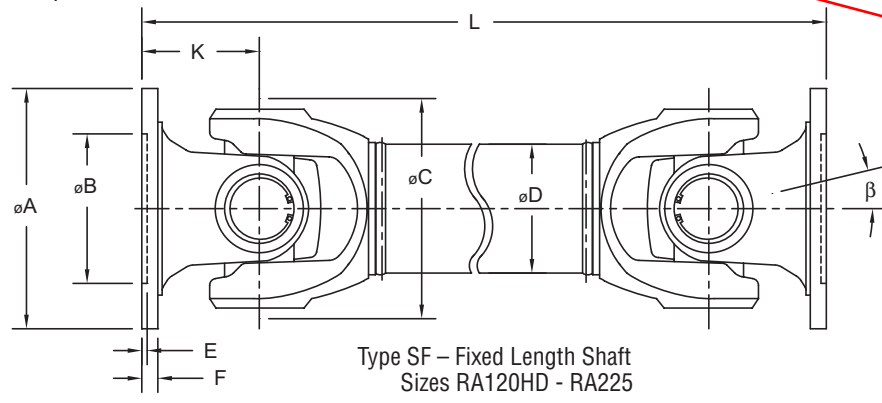
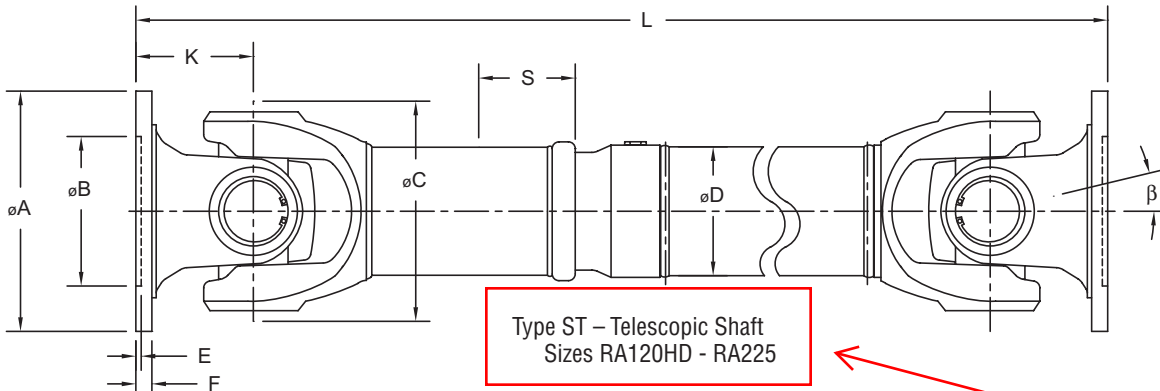
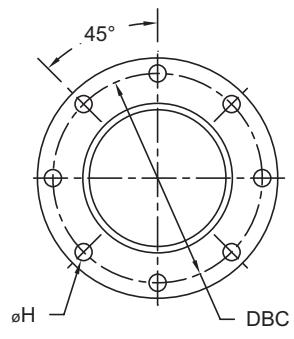


Engineering Data Series Metric

Sizes RA120HD - RA225



10 Bolt Flange Design



8 Bolt Flange Design

Size	RA120HD		RA150HD		RA150	
Torque Ratings						
	Lb.in.	Nm	Lb.in.	Nm	Lb.in.	Nm
T _e	15,930	1,800	22,125	2,500	35,400	4,000
T _{ow}	22,302	2,520	30,975	3,500	49,560	5,600
T _L	22,037	2,490	30,842	3,485	40,462	4,572
T _p	47,348	5,350	62,393	7,050	94,253	10,650

Dimensional Data (inches and millimeters except where noted)												
	inch		mm		inch		mm		inch		mm	
β	20°		20°		20°		20°		20°		20°	
A	4.72	120	5.91	150	5.91	150	7.09	180	5.91	150	7.09	180
B	2.95	75	3.54	90	3.54	90	4.33	110	3.54	90	4.33	110
C	4.92	125	4.92	125	5.43	138	5.43	138	5.91	150	5.91	150
D ⁽¹⁾	2.75	70	2.75	70	3.15	80	3.12	80	3.50	90	3.50	90
E	0.10	2.5	0.12	3	0.12	3	0.14	3.6	0.12	3	0.14	3.6
F	0.35	9	0.35	9	0.39	10	0.39	10	0.47	12	0.47	12
K	2.36	60	2.36	60	2.56	65	2.56	65	2.95	75	2.95	75
DBC	4	101.5	5.12	130	5.12	130	6.12	155.5	5.12	130	6.12	155.5
Bolt Qty.	8	8	8	8	8	8	8	8	8	8	8	8
H	0.39	10	0.39	10	0.47	12	0.47	12	0.47	12	0.55	14

Minimum Length L⁽²⁾ / Length Compensation S						
	inch		mm		mm	
ST L/S	19.33/2.36		491/60		21.65/4.33	
SF L	12.09		307		13.58	
SC L/S	13.58/1.38		345/35		14.17/1.57	
SC L/S	14.76/1.97		375/50		15.75/3.15	
SC L/S	16.54/2.36		420/60		18.11/3.15	
SC L/S	17.72/2.36		450/60		—	
SC L/S	—		—		—	
SC L/S	—		—		25.20/4.33 ⁽³⁾	
SC L/S	—		—		640/110 ⁽³⁾	

Size	RA150HD		RA180		RA225	
Torque Ratings						
	Lb.in.	Nm	Lb.in.	Nm	Lb.in.	Nm
T _e	39,825	4,500	64,605	7,300	100,005	11,300
T _{ow}	55,755	6,300	90,447	10,220	140,007	15,820
T _L	51,596	5,830	71,614	8,092	124,100	14,023
T _p	115,050	13,000	193,815	21,900	309,750	35,000

Dimensional Data (inches and millimeters except where noted)												
	inch		mm		inch		mm		inch		mm	
β	30°		30°		30°		30°		30°		25°	
A	6.50	165	7.09	180	7.09	180	8.86	225	8.86	225	9.84	250
B	3.74	95	4.33	110	4.33	110	5.51	140	5.51	140	5.51	140
C	6.22	158	6.22	158	7	178	7	178	8.03	204	8.03	204
D ⁽¹⁾	4	100	4	100	4.38	110	4.38	110	5.50	140	5.50	140
E	0.12	3.0	0.14	3.6	0.14	3.6	0.20	5	0.20	5	0.24	6
F	0.47	12	0.47	12	0.55	14	0.59	15	0.59	15	0.71	18
K	3.39	86	3.39	86	3.78	96	3.78	96	4.33	110	4.33	110
DBC	5.51	140	6.12	155.5	6.12	155.5	7.72	196	7.72	196	8.58	218
Bolt Qty.	8	8	8	8	10	10	8	8	8	8	8	8
H	0.63	16	0.63	16	0.63	16	0.63	16	0.63	16	0.71	18

Minimum Length L⁽²⁾ / Length Compensation S						
	inch		mm		mm	
ST L/S	25.98/4.33		660/110		29.13/4.33	
SF L	16.93		430		18.31	
SC L/S	15.75/1.77 ⁽³⁾		400/45 ⁽³⁾		18.50/1.77 ⁽³⁾	
SC L/S	17.32/3.15 ⁽³⁾		440/80 ⁽³⁾		19.69/2.36 ⁽³⁾	
SC L/S	19.49/1.77		495/45		22.05/1.77	
SC L/S	21.85/3.15		555/80		23.62/2.36	
SC L/S	23.62/4.33		600/110		25.59/4.33	
SC L/S	—		—		—	
SC L/S	—		—		—	

⁽¹⁾ Special tube diameters available upon request

⁽²⁾ L is minimum for ST and SF designs

⁽³⁾ Special yokes required, please consult factory

Longer/shorter length compensation available upon request. Popular flange yoke configurations shown, special designs available upon request.