

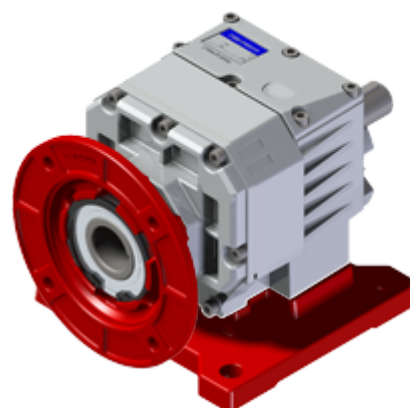
# P452AB401IN-GB3-

Price

Lead time

## Configuration

Type:	<b>P</b>
Size:	<b>452A</b>
Input:	<b>132 B5 ø300</b>
Output shaft/bore:	<b>ø35</b>
Mounting:	<b>B4</b>
Mounting position:	<b>B3</b>
Input bore:	-
Coupling:	-



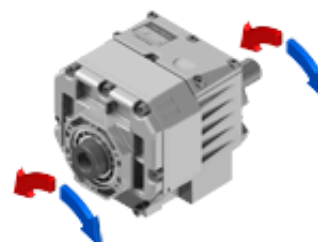
## Technical data

Input rpm ( $n_1$ ):	<b>1400 min<sup>-1</sup></b>
Output rpm ( $n_2$ ):	<b>387.69 min<sup>-1</sup></b>
Ratio (i):	<b>3.61</b>
Nominal power ( $P_{1R}$ ):	<b>6.34 kW</b>
Nominal torque ( $M_{2R}$ ):	<b>150 Nm</b>
Dynamic efficiency (RD):	<b>96%</b>

## Selection

Motor power ( $P_{1M}$ ):	<b>5.50 kW</b>
Output torque ( $M_{2M}$ ):	<b>127 Nm</b>
Service factor (f.s.):	<b>1.2</b>

## Direction of rotation



## Lubrication

Oil quantity:	<b>0.31l</b>
AGIP:	<b>Telium VSF 320</b>
SHELL:	<b>Omala S4 WE 320</b>

## On our website

- Features
- How to order
- Dimension
- Accessories/options
- Complete list of feet
- Electric motors
- Selection guide - fs
- Mounting pos. - lubricant

- Calc. the overhung load
- Atex certification
- Installation check list
- Spare parts list
- Complete catalogue
- Selection by power (xls)

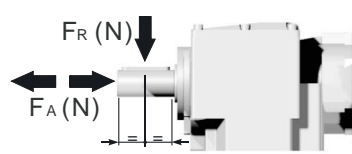
## Axial and radial loads

Input shaft



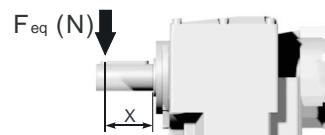
$n_2$ (min <sup>-1</sup> )	FA (N)	FR (N)
<b>1400</b>	400	2000
<b>900</b>	440	2200
<b>500</b>	440	2200

Output shaft



$n_2$ (min <sup>-1</sup> )	FA (N)	FR (N)
<b>300</b>	415	2070
<b>250</b>	430	2160
<b>200</b>	470	2340
<b>140</b>	540	2700
<b>120</b>	560	2790
<b>85</b>	630	3150
<b>70</b>	700	3510
<b>40</b>	810	4050
<b>15</b>	900	4500

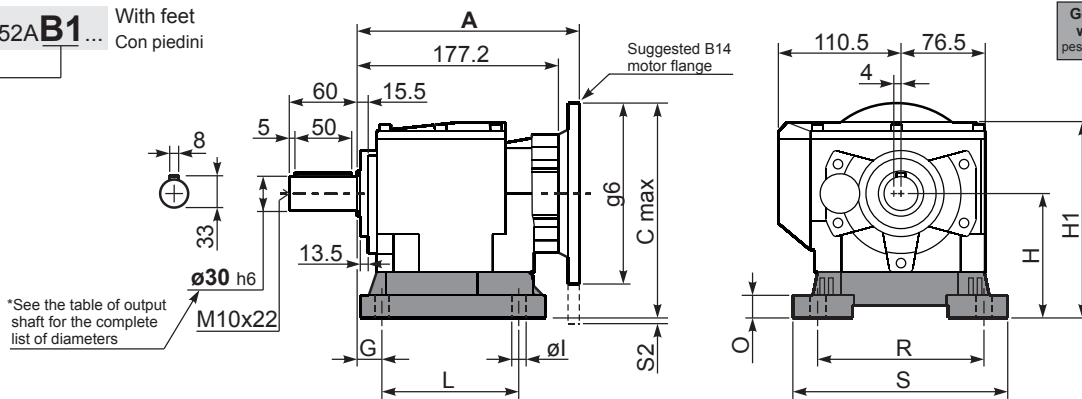
$$F_{eq} = F_R \frac{51}{X+21}$$



## Note

### 3D dimensions on the Web

**P452AB1...** With feet  
Con piedini



**Gearbox weight** With flange **8.7 kg**  
**peso riduttore** With feet **8.9 Kg**

\*See the table of output shaft for the complete list of diameters

### Feet / piedini

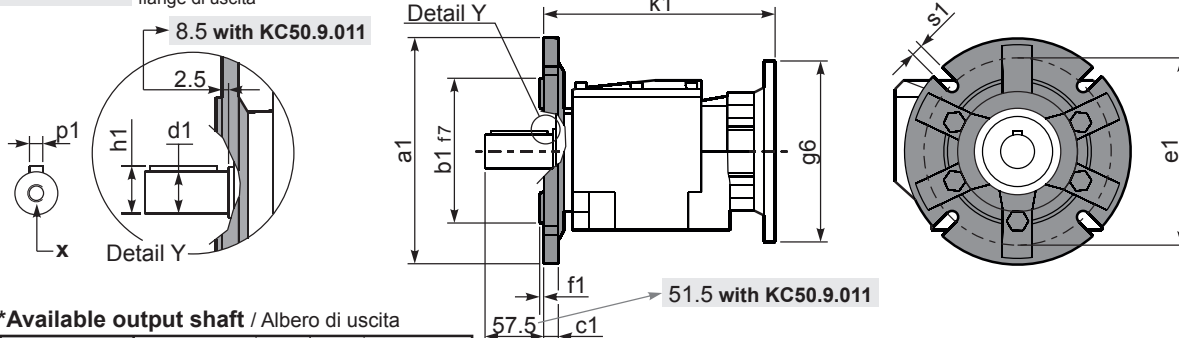
Feet Code	Market reference	G	H	R	L	S	H1	O	Ø1	S2 only with motor flange	B5 max. Flange	kit code
B3	312/3	18	110	160	130	190	173	20	11	15 100/112B5 40 132B5	-	KC50.9.024
B4	30/35	20	130	180	149.5	216	193	18	14	20 132B5	-	KC60.9.024
S4	47-57	30	115	135	165	170	178	24	13.5	-	80/90B5	KC50.9.022
H3	023-233	30	130	135	135	185	193	25	14	20 132B5	-	KC50.9.025
M2	52/3	30	110	135+150	100	190	173	18	11	15 100/112B5 40 132B5	-	KC50.9.023
L6	06	19	125	160	106	205	188	8	14	25 132B5	-	KC50.9.026LM
E2	2202/3	13	100	135	192	164	163	6	14	-	71B5	KC50.9.027LM

Other feet are available, see our web site  
Sono disponibili altri piedini, consulta il nostro sito web

**A see on page bottom**

Most popular types  
Tipi più diffusi

**P452A-F...** Output flanges  
flange di uscita

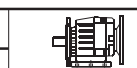


### \*Available output shaft / Albero di uscita

	Shaft - d1	p1	h1	x
Standard	Ø 30x60	8	33	M10x22
On request A richiesta	Ø 24x50	8	27	M8x19
	Ø 25x50	8	28	M8x19
	Ø 28x60	8	31	M8x19
	Ø 35x60	10	38	M10x22

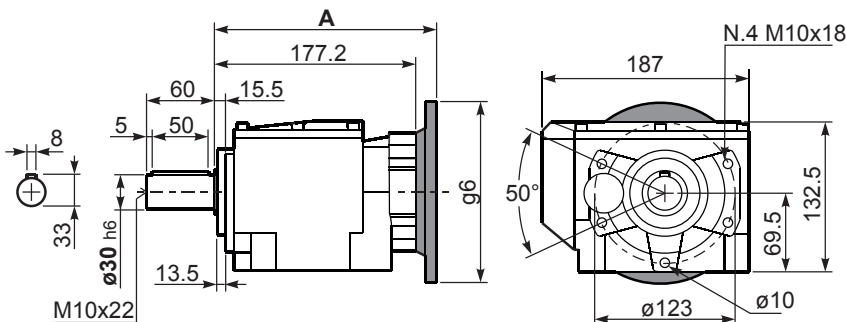
### Available output flanges / flange di uscita

a1 Ø	b1	c1	e1	f1	s1	kit code
160	110	14	130	3.5	11	KC50.9.011
200	130	13	165	3.5	11	KC50.9.012
250	180	15.5	215	4	14	KC50.9.013

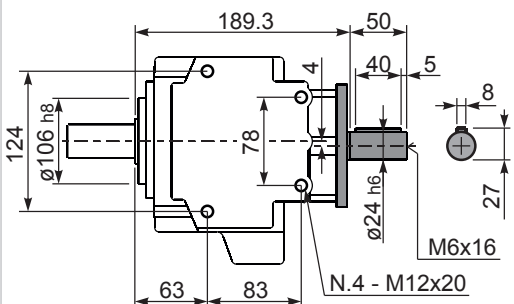


With flange and feet only on request.  
Ask for compatibility

**P452A-N...** Basic gearbox  
Riduttore base



**R452A-N...** Input Shaft  
Albero in entrata



B5 Motor Flanges	A	C_max	g6	k1	kit code	k1 with KC50.9.011
71 B5	195.7	222	160	198.2	K023.4.041	204.2
80/90 B5	197.7	242	200	200.2	K023.4.042	206.2
100/112 B5	206.7	267	250	209.2	K023.4.043	215.2
132 B5	224.7	292	300	227.2	KC50.4.043	233.2

B14 Motor Flanges	A	C_max	g6	k1	kit code	k1 with KC50.9.011
80 B14	197.7	202	120	200.2	K085.4.046	206.2
90 B14	197.7	212	140	200.2	K085.4.045	206.2
100/112 B14	206.7	222	160	209.2	K085.4.047	215.2
132 B14	224.7	242	200	227.2	KC50.4.041	233.2