

SPECIFICATIONS

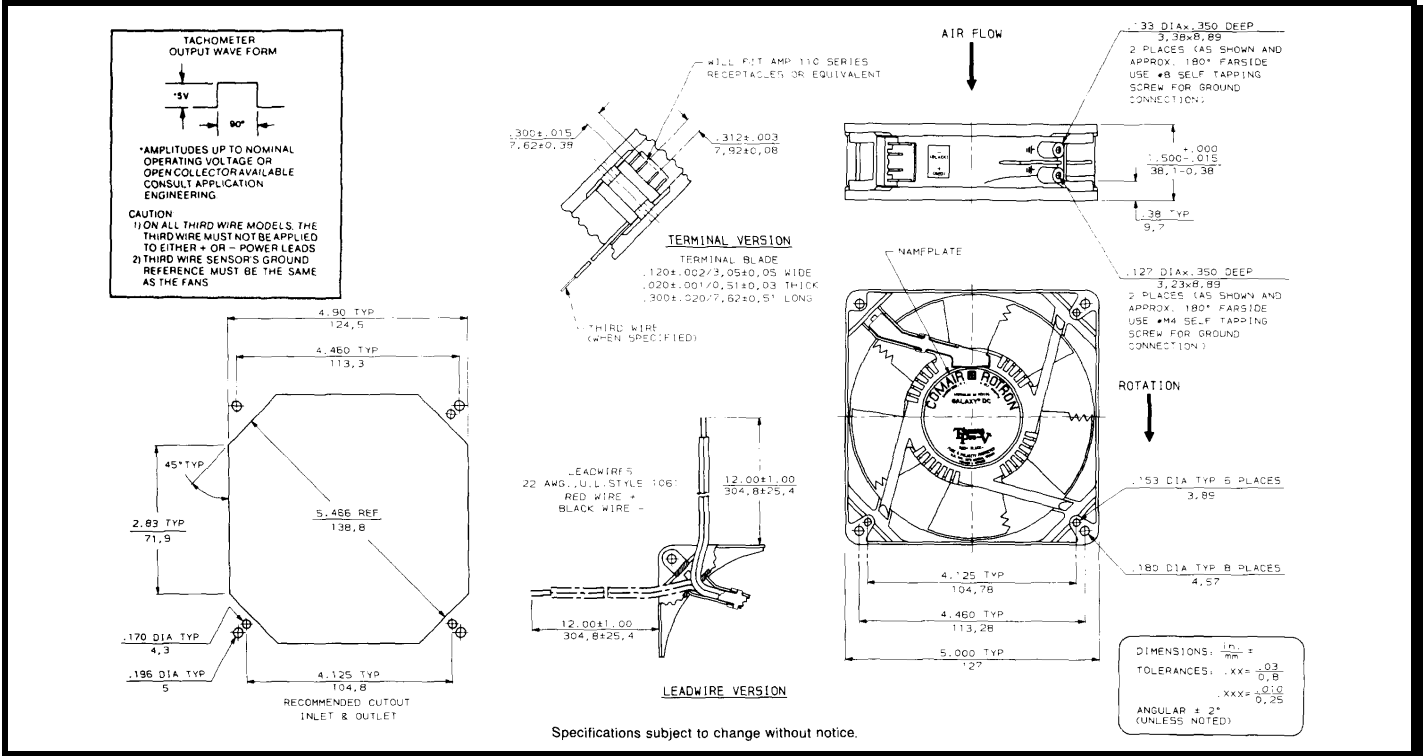
RoHS Compliant

Model Number: GLD24Z6A2
Part Number: 19040167A

Version: 01
Mar 21, 2025



Mechanical Drawing:



Motor:

Nominal Voltage = 24 vdc
 Operating Voltage Range = 16 - 32 vdc
 Nominal Running Current = 1.0 amps
 Locked Rotor Current = 2.0 amps
 Running Power = 24.0 watts
 Average Speed = 4100 RPM
 Bearings = Ball
 Air Flow = 192 cfm
 Acoustic = 59.4 dBA

Construction:

Venturi: Die cast zinc alloy, painted black.
 Propeller: Plastic black, UL94V-0

Life Expectancy:

This fan is designed for continuous duty life of 60,000 hours at 70°C.

Agencies:

UL, CUL, CE

Additional Features:

Brushless DC Motor
 Electronic Locked Rotor Protected
 Polarity Protection
 Automatic Restart
 Operating Temperature: -10 °C to +70 °C
 Storage Temperature: -40 °C to +85 °C

Tachometer:

Output: 5V TTL
 Ic: 10mA Typical
 Pulses per Revolution: 2
 Isolated: No

Speed Control:

PWM: 200 ~ 2KHz, Open Collector
 <10% Duty: Off
 10%~95% Duty: Linear Ramp
 >95% Duty or Open Lead Wire: Full Speed

Termination:

12" Harness Assembly, 22 AWG, UL 1061 Style
 Connector-Molex 43025-0400
 Terminal-Molex 43030-0003
 Pin 1: Red = Power(+)
 Pin 2: Blue/White = Tachometer Output
 Pin 3: Yellow = PWM speed control
 Pin 4: Black = Ground(-)

PQ Curve:

