

Flansch-Heizkörper
Flanged Heater
Explosionsschutz/Explosion proof

Bauform/Size B3
Type DHF22B3-12,5-T4
Spannung/Voltage 380V3~

Maßblatt
Dimension Sheet HK10P

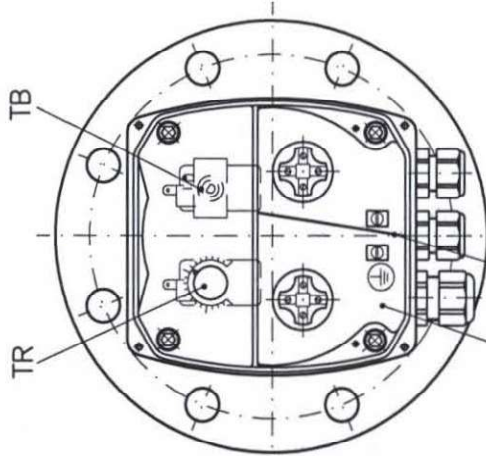
A-10124636-1

K-820760-0020

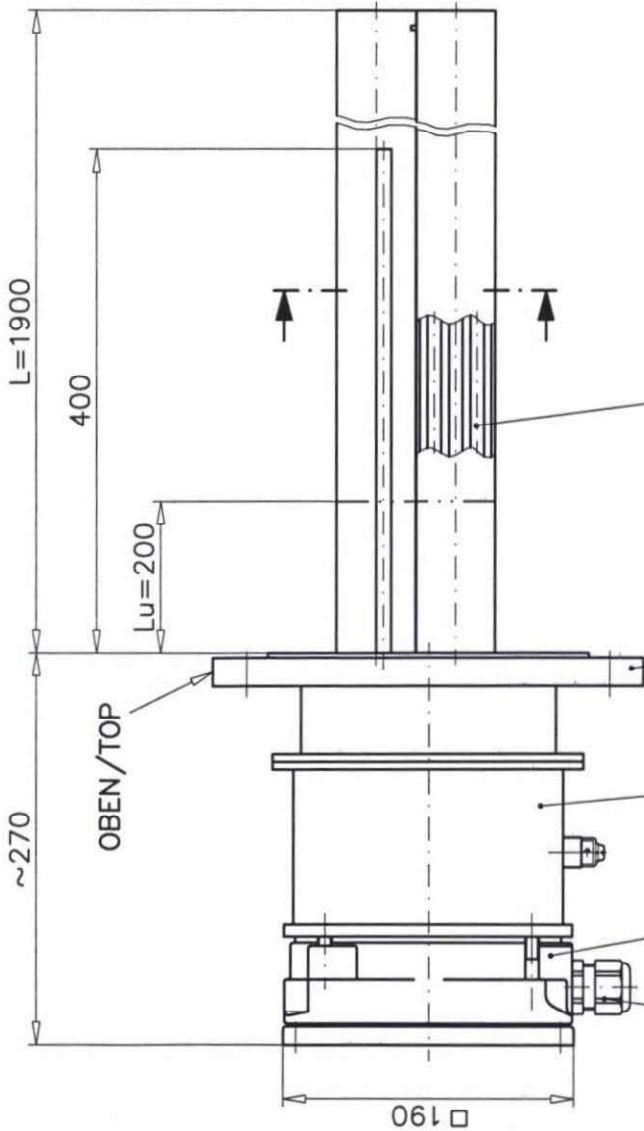
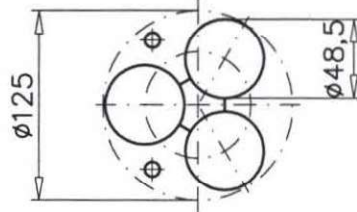
Art.-Nr.50031778

18.07.2013 NTh

Ansicht ohne Anschlußkastendeckel
View without connection box cover



Trennung/Barrier
Elektrischer Anschlußraum
Electrical connection box



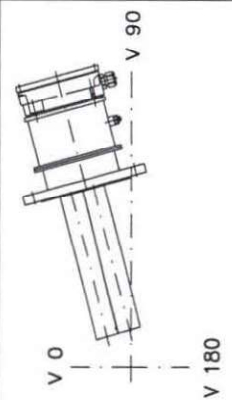
Heizeinsatz in Patronenform mit 3
auswechselbaren Rundrohrheiz
Heating inset cartridge type with 3
exchangeable heating elements

Flansch / Flange 6" 150lbs RF ANSI B16.5-2009

Ex d IIC druckfest gekapseltes Gehäuse / Flameproof enclosure

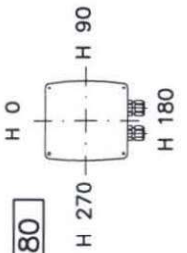
Ex e Anschlußkasten / Connection box

Kabelverschraubungen / Cable glands 1xM32x1,5 2xM25x1,5



V 0
V 180

V 90



H 180

Einbaulage waagrecht
"OBEN" markiert

Mounting position horizontal
"TOP" is marked

TAG X-0152-E-003