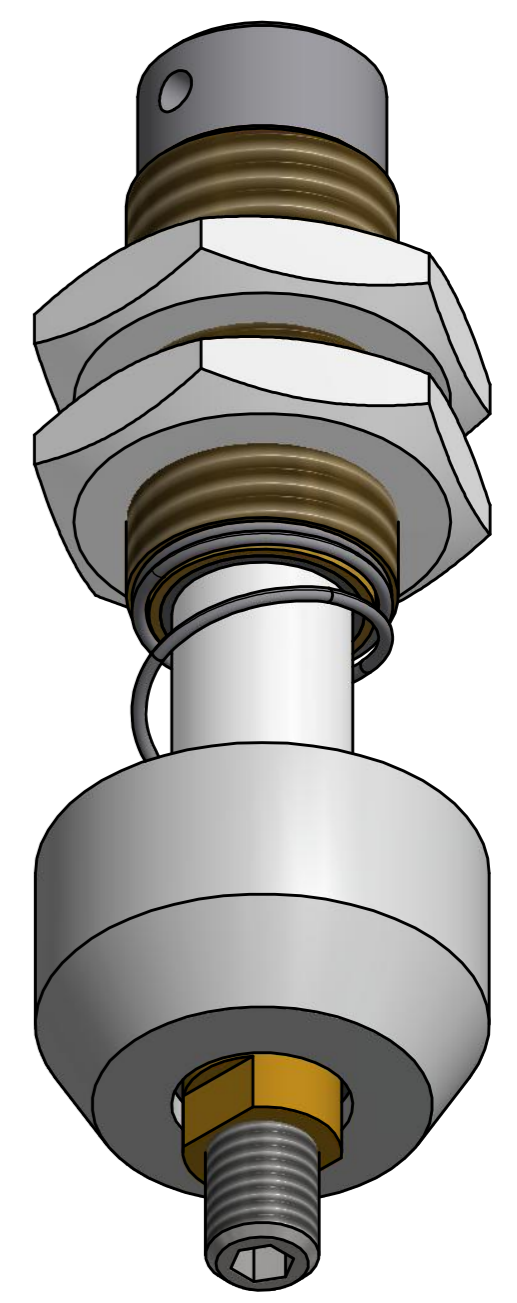
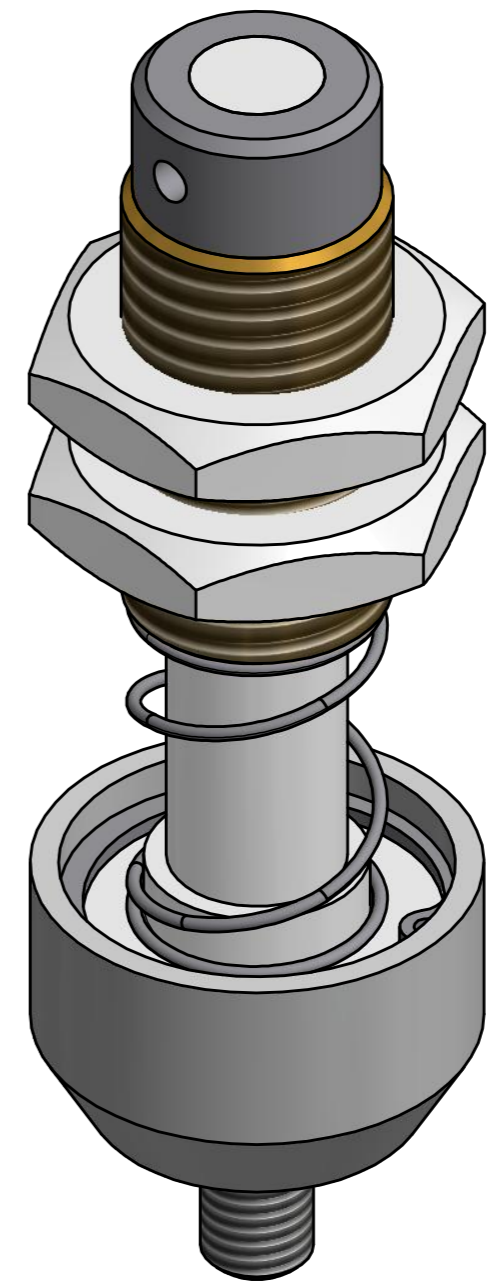
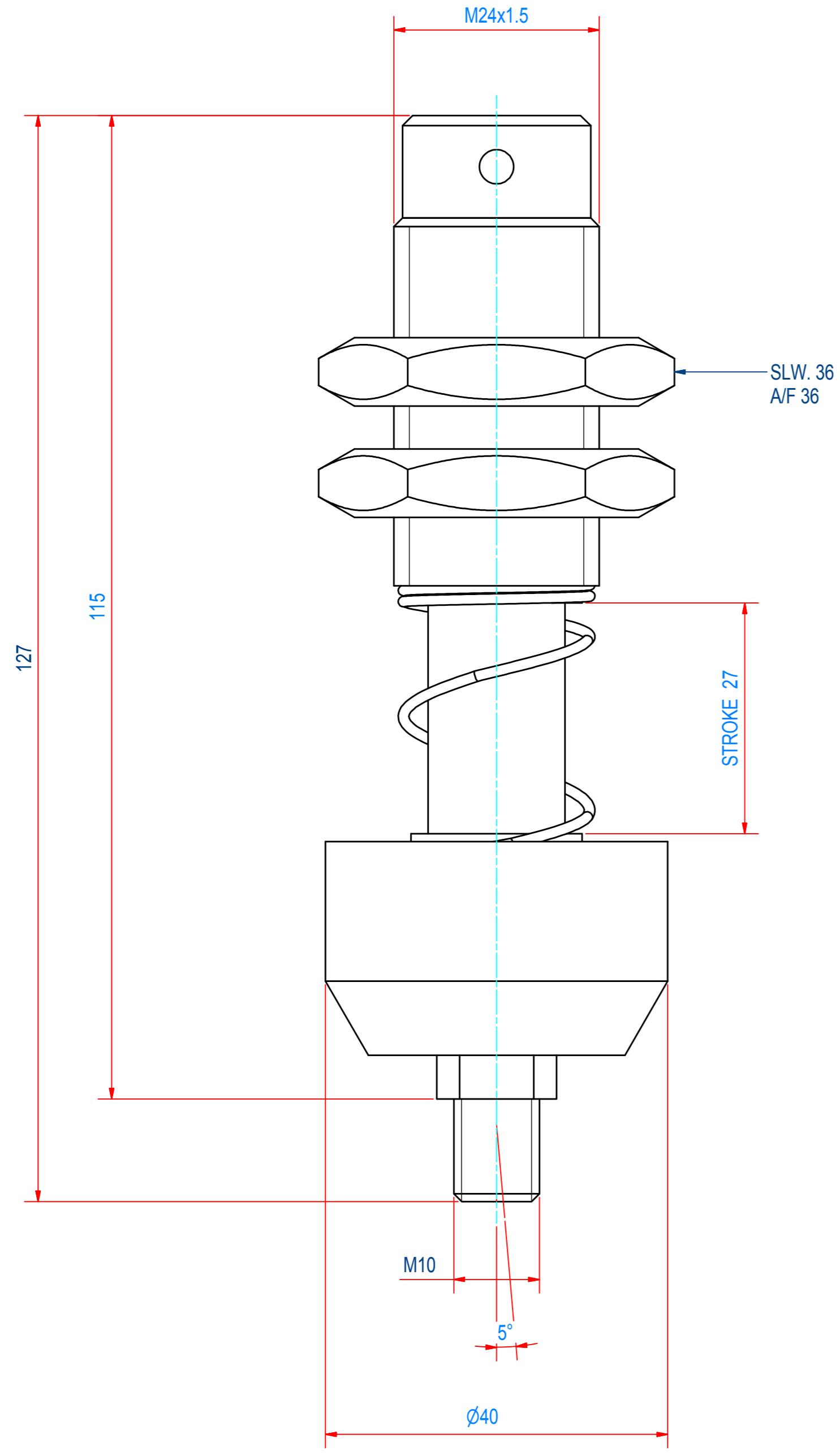


REV	DATE	BY	DESCRIPTION
-	2-7-2013	PB	NEW VAULT, NEW REVISION. NOTHING CHANGED. OLD REV WAS C
A	25-8-2014	PB	SET SCREW CHANGED



ITEM	QTY	M50120	ASSEMBLY SPINDLE TPGC990001	Dimensions	
RAW MAT.	QTY	MAT. NUMBER	MAT. DESCRIPTION	LENGTH (mm)	WIDTH (mm)
1	1	M50120	ASSEMBLY SPINDLE TPGC990001		
1	1				
Sheet: A2		Extra info:		General tolerance: ISO 2768 - mK	
Drawn: PB		Weight (kg): 0,5		Drawn according: ISO268; ISO1101; ISO2553	
Date: 2-7-2013				Status: Standard	
Spare part: False				Customer reference number:	
Quick search: TPGC99 M10		© All rights reserved. Reproduction is not permitted without written permission of GOUDSMIT Magnetic Systems BV		File number: TPGC990001 Rev: A	
Description: HGA-PL-S-M10-M24-RO-FL				Part number: TPGC990001 Rev: A	